



EpCAM mouse mAb

Catalog No	YP-Ab-16273
Isotype	IgG
Reactivity	Human
Applications	WB;IP
Gene Name	cd326
Protein Name	
Immunogen	Purified recombinant EpCAM protein fragments expressed in E.coli.
Specificity	This antibody detects endogenous levels of EpCAM and does not cross-react with related proteins.
Formulation	Liquid in PBS containing 50% glycerol, 0.5% BSA and 0.02% sodium azide.
Source	Monoclonal, Mouse
Purification	The antibody was affinity-purified from mouse ascites by affinity-chromatography using epitope-specific immunogen.
Dilution	wb 1:1000
Concentration	1 mg/ml
Purity	≥90%
Storage Stability	-20°C/1 year
Synonyms	17 1A; 323/A3; Adenocarcinoma associated antigen; Adenocarcinoma-associated antigen; Antigen identified by monoclonal antibody AUA1; AUA1; CD326; CD326 antigen; Cell surface glycoprotein Trop 1; Cell surface glycoprotein Trop 2; Cell surface glycoprotein Trop-1; CO 17A; CO17 1A; CO17A; DIAR5; EGP 2; EGP; EGP2; EGP314; EGP40; Ep CAM; Ep-CAM; EPCAM; EPCAM_HUMAN; Epithelial cell adhesion molecule; Epithelial Cell Adhesion Molecule Intracellular Domain (EpCAM-ICD); Epithelial cell surface antigen; Epithelial cellular adhesion molecule; Epithelial glycoprotein 1; Epithelial glycoprotein 314; Epithelial glycoprotein; ESA; GA733 1; GA733 2; GA733-2; gastrointestinal tumor-associated antigen 2, 35-KD glycoprotein; hEGP 2; hEGP314; HNPCC8; Human epithelial glycoprotein 2; KS 1/4 antigen; KS1/4; KSA; Lymphocyte antigen 74; M1S 1; M1S2; M4S1; Major gastrointestinal tumor associated protein GA733 2; Major gastrointestinal tumor-associated protein GA733-2; Membrane component chromosome 4 surface ma
Observed Band	39kD
Cell Pathway	Lateral cell membrane ; Single-pass type I membrane protein . Cell junction, tight junction . Colocalizes with CLDN7 at the lateral cell membrane and tight junction. .



Tissue Specificity

Highly and selectively expressed by undifferentiated rather than differentiated embryonic stem cells (ESC). Levels rapidly diminish as soon as ESC's differentiate (at protein levels). Expressed in almost all epithelial cell membranes but not on mesodermal or neural cell membranes. Found on the surface of adenocarcinoma.

Function

Background

This gene encodes a carcinoma-associated antigen and is a member of a family that includes at least two type I membrane proteins. This antigen is expressed on most normal epithelial cells and gastrointestinal carcinomas and functions as a homotypic calcium-independent cell adhesion molecule. The antigen is being used as a target for immunotherapy treatment of human carcinomas. Mutations in this gene result in congenital tufting enteropathy. [provided by RefSeq, Dec 2008],

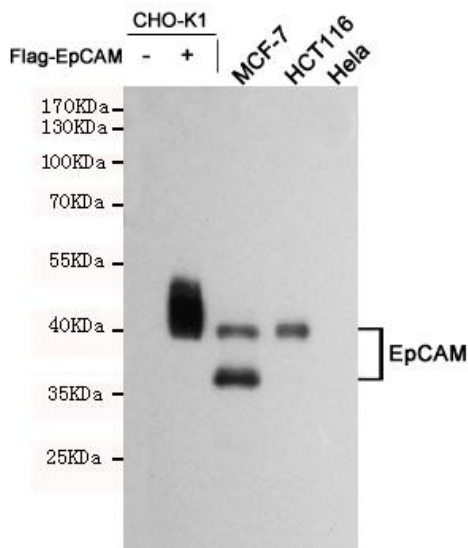
matters needing attention

Avoid repeated freezing and thawing!

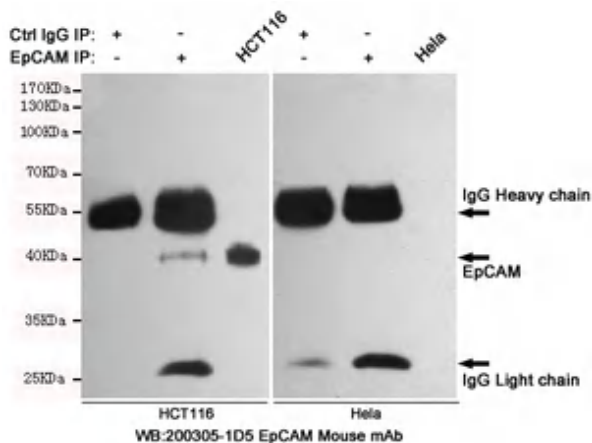
Usage suggestions

This product can be used in immunological reaction related experiments. For more information, please consult technical personnel.

Products Images



Western blot analysis of extracts from CHO-K1, CHO-K1 transfected by Flag-EpCAM, MCF7 (EpCAM positive), HCT116 (EpCAM positive), and HeLa (EpCAM negative) cell lysates using EpCAM mouse mAb (1:1000 diluted). Predicted band size: 39 kDa. Observed band size: 39/35 kDa.



Immunoprecipitation analysis of HCT116 and HeLa cell lysates using EpCAM.